

# CARBON REDUCTION PLAN. 2025

---



*Photo Credit: Hugh Robinson, winner of gbp's staff 'tree' photo competition.*



**The Power of Partnership**



# CONTENTS

---

<b>Purpose</b>	<b>3</b>
<b>Executive Summary</b>	<b>4</b>
<b>Baseline Emissions Year: 2019</b>	<b>5</b>
<b>Current Emissions Reporting: 2024</b>	<b>6</b>
<b>Emissions Reduction Targets</b>	<b>7</b>
<b>Carbon Reduction Projects</b>	<b>8</b>
<b>Future Measures</b>	<b>9</b>
<b>Declaration and Sign Off</b>	<b>10</b>

# PURPOSE

**This Carbon Reduction Plan (CRP) has been prepared using the Cabinet Office template to ensure compliance with PPN 06 21.**

## **Supplier name**

gbpartnerships group (gbp group) of companies including:

- GBP Consult Limited
- GB Partnerships Limited
- GBP Develop Limited

The above companies are all covered by the commitments contained within this Carbon Reduction Plan (CRP).

## **Publication date:**

8<sup>th</sup> April 2025

## **Commitment to achieving Net Zero**

gbp group is committed to achieving Net Zero emissions by 2030. This commitment explicitly extends to:

- GBP Consult Limited
- GB Partnerships Limited
- GBP Develop Limited

## **Baseline emissions footprint**

Baseline emissions are a record of the greenhouse gases that have been produced in the past and were produced prior to the introduction of any strategies to reduce emissions. Baseline emissions are the reference point against which emissions reduction can be measured.



# EXECUTIVE SUMMARY

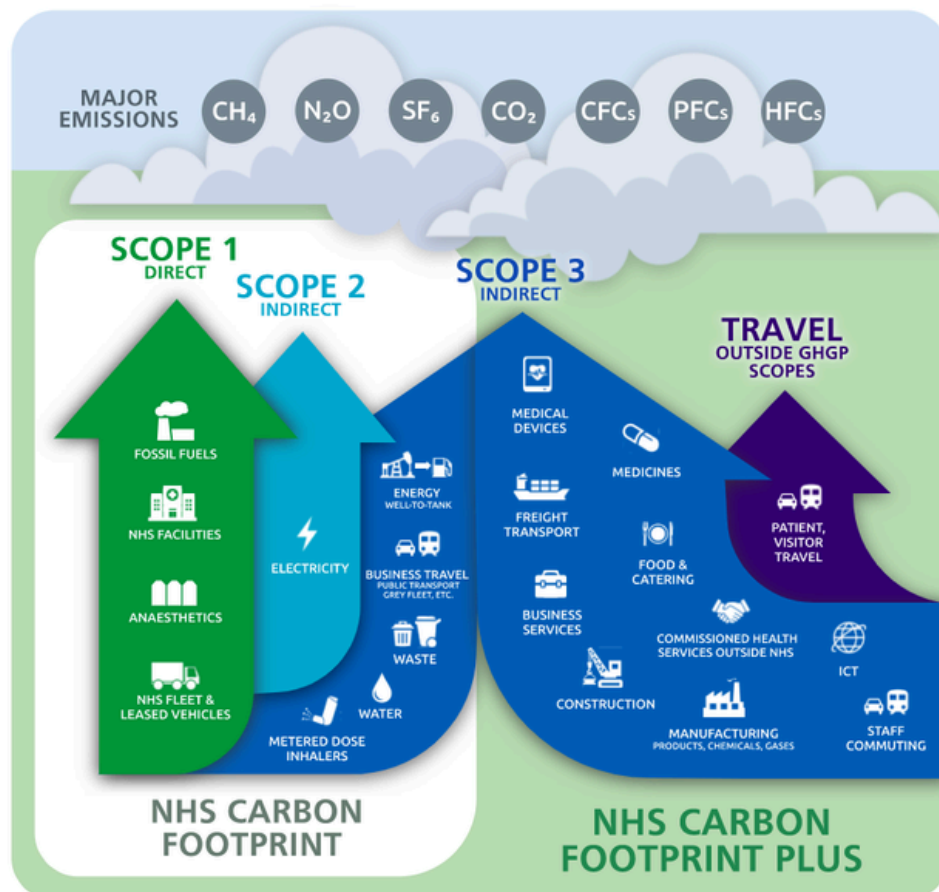
**gbpartnerships group is a multi-faceted group of companies with a proven track record in consultancy, property development and asset management.**

The dedicated team of 80 staff, work in partnership with our clients who include public sector organisations to unlock complex estate challenges through planning, developing, and maintaining the highest quality public buildings and community infrastructure projects.

In addition to working with partners and clients to help achieve a carbon reduction, gbpartnerships are working to achieve the government's net zero targets by 2030.

gbp group companies are working with partners to identify opportunities to decarbonise the NHS estate to help achieve two clear targets as outlined in the 'Delivering a 'Net Zero' National Health Service' report:

- The NHS Carbon Footprint: for the emissions it controls directly, net zero by 2040
- The NHS Carbon Footprint Plus: for the emissions it can influence, net zero by 2045.



# BASELINE EMISSIONS

## YEAR: 2019

Baseline year emissions	
Emissions	TOTAL (tCO <sub>2</sub> e)
Scope 1	0
Scope 2	9.58
Scope 3 (included sources)	1. Upstream transportation and distribution - Home working: 14.126 - Printing: 0.763 2. Waste generated in operations: 80.681 3. Business travel: 76.698 4. Employee commuting: 90.114 5. Downstream transportation and distribution: 0  Total Scope 3: 262.382
<b>TOTAL EMISSIONS</b>	<b>271.967</b>

### Additional details relating to the Baseline Emissions calculations

Our Baseline Year of Emissions calculations has been set at 2019 when the business's initial Carbon Action Objectives were set out, which are included within our Environmental Policy. The baseline year 2019 is pre-Covid-19 pandemic, based on our financial year of April to March.

Scope 1 emissions: As a management-based business, we do not have Scope 1 emissions to report, and therefore these are reported at zero.

Scope 2 emissions are based on our head office building for which energy is purchased.

Scope 3 emissions are based on our day-to-day business carried out by employees and are broken down below. They exclude supply chain emissions due to the complexity associated with collecting that data.

# CURRENT EMISSIONS REPORTING 2024

---

Reporting year 2024	
Emissions	TOTAL (tCO <sub>2</sub> e)
Scope 1	0
Scope 2	3.18
Scope 3 (included sources)	<div>1. Upstream transportation and distribution<ul style="list-style-type: none"><li>- Home working: 36.04</li><li>- Hotel stays: 1.5</li></ul></div> <div>2. Waste generated in operations: 43.7</div> <div>3. Business travel<ul style="list-style-type: none"><li>- Car travel business: 22.83</li><li>- Train travel business: 1.87</li><li>- Business travel air: 4.96</li></ul></div> <div>4. Employee commuting: 6.04</div> <div>5. Downstream transportation and distribution: 0</div> <div>Total Scope 3: 116.94</div>
<b>TOTAL EMISSIONS</b>	<b>120.13</b>



# EMISSIONS REDUCTION TARGETS

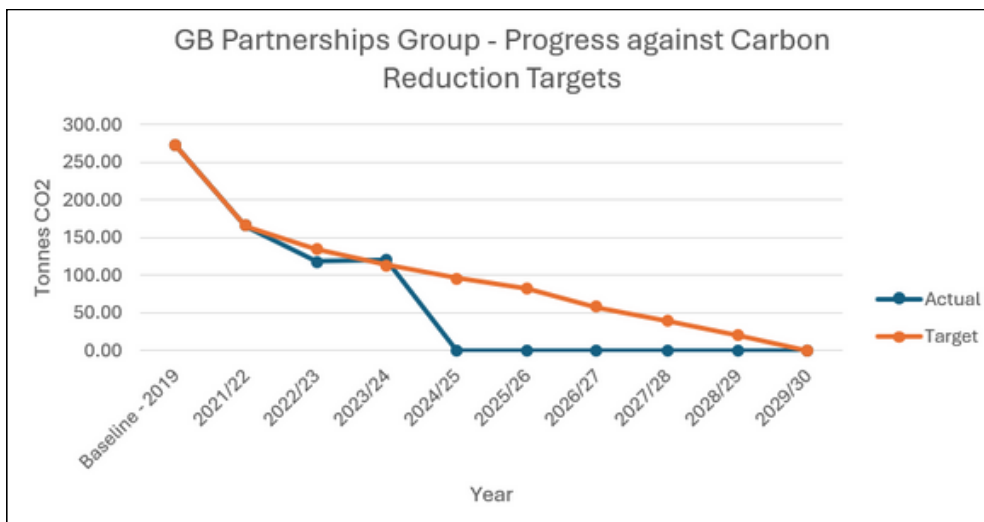
To continue our progress to achieving Net Zero, we have adopted the following carbon reduction targets.

We project that carbon emissions will decrease over the next five years to 0 tCO<sub>2</sub>e by 2030. This is a reduction of 100%

This will be achieved through the reduction of carbon emissions in our operations as well as utilising credible carbon offsetting schemes.

Progress against these targets can be seen in the following graph.

**Chart: Group progress against carbon reduction targets**



# CARBON REDUCTION PROJECTS

The following environmental management measures and projects have been completed or implemented since the 2019 baseline.

The carbon emission reduction achieved by these schemes equate to 151.837 tCO<sub>2</sub>e, a 55.8% reduction against the 2019 baseline and the measures will be in effect when performing the contract:

Completed
Adoption of remote working practices to significantly reduce commuting and business travel emissions
Electric Vehicle salary sacrifice scheme made available to staff to make low carbon car travel more financially accessible
Encouraging and enabling staff car sharing to company events/meetings
Initiatives to remove the use of paper and printing from our operations
Cycle-to-work scheme made available to staff to encourage low carbon commuting
Zero IT assets to landfill initiative
Environmental and carbon awareness training deployed to all staff
Creation of the gbp group Sustainability Working Group to share best sustainability practice across the company
Recycling of waste in head office
Continued accreditation to ISO:14001
Improving assumptions in our calculations by making use of expenses data for travel emissions and hotel stays



# FUTURE MEASURES

Proposed future measures
Increasing uptake of Electric Vehicle scheme by staff through increasing awareness via our staff communications
Moving to a lower energy head office once our existing lease expires
Improvement to active travel facilities at our head office to encourage active travel commuting
Increased staff training on carbon and environmental issues
Utilising credible carbon off-setting schemes
Improving the reliability of data assumptions used in the calculation of key elements of our emissions – such as the amount of waste produced (we currently use an assumed weight per person per day and plan to gather more data to verify or amend that assumption)

# DECLARATION AND SIGN OFF

---

This Carbon Reduction Plan has been completed in accordance with PPN 06/21 and associated guidance and reporting standard for Carbon Reduction Plans.

Emissions have been reported and recorded in accordance with the published reporting standard for Carbon Reduction Plans and the GHG Reporting Protocol corporate standard and uses the appropriate Government emission conversion factors for greenhouse gas company reporting.

Scope 1 and Scope 2 emissions have been reported in accordance with SECR requirements, and the required subset of Scope 3 emissions have been reported in accordance with the published reporting standard for Carbon Reduction Plans and the Corporate Value Chain (Scope 3) Standard.

This Carbon Reduction Plan has been reviewed and signed off by the board of directors (or equivalent management body).

Signed on behalf of the Supplier (gbp group limited)

A handwritten signature in black ink, appearing to read 'Hugh Robinson', with a long horizontal flourish extending to the right.

**Hugh Robinson**

Development Director & Chair of GB Partnerships Sustainability Working Group

Date: 8<sup>th</sup> April 2025