

# Case Study

## Green Plan Expertise for Mid and South Essex



**Client:** Mid and South Essex Health and Care Partnership (ICS)  
**Project status:** Completed  
**Timescales:** January to March 2022  
**Services provided:** Specialist expertise to produce the Inaugural Green Plan.

gbpartnerships worked with colleagues from across Mid and South Essex Health and Care Partnership (HCP) to produce the inaugural Green Plan ahead of the end of March 2022 deadline. Working with colleagues from across the system to ensure as wide ranging a document as possible.



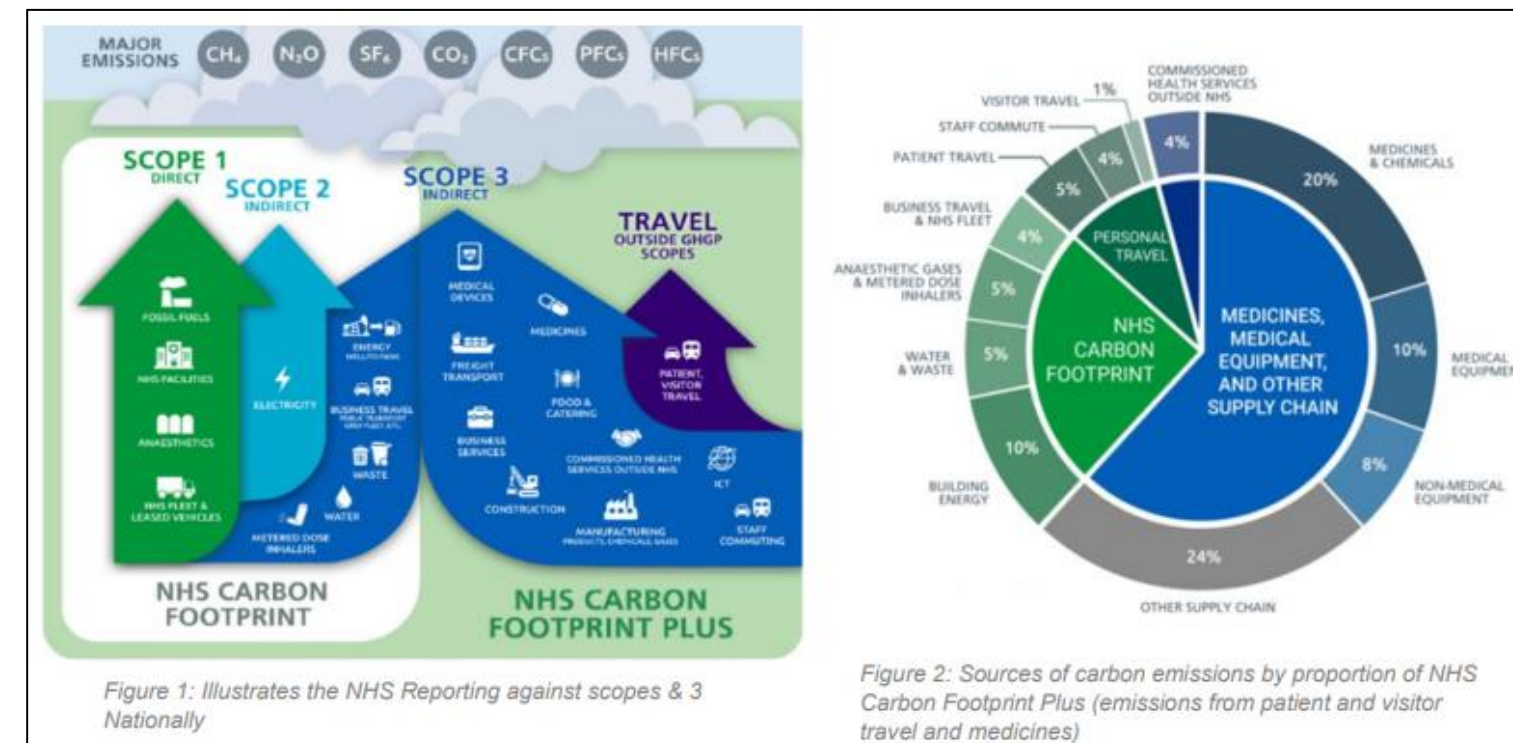
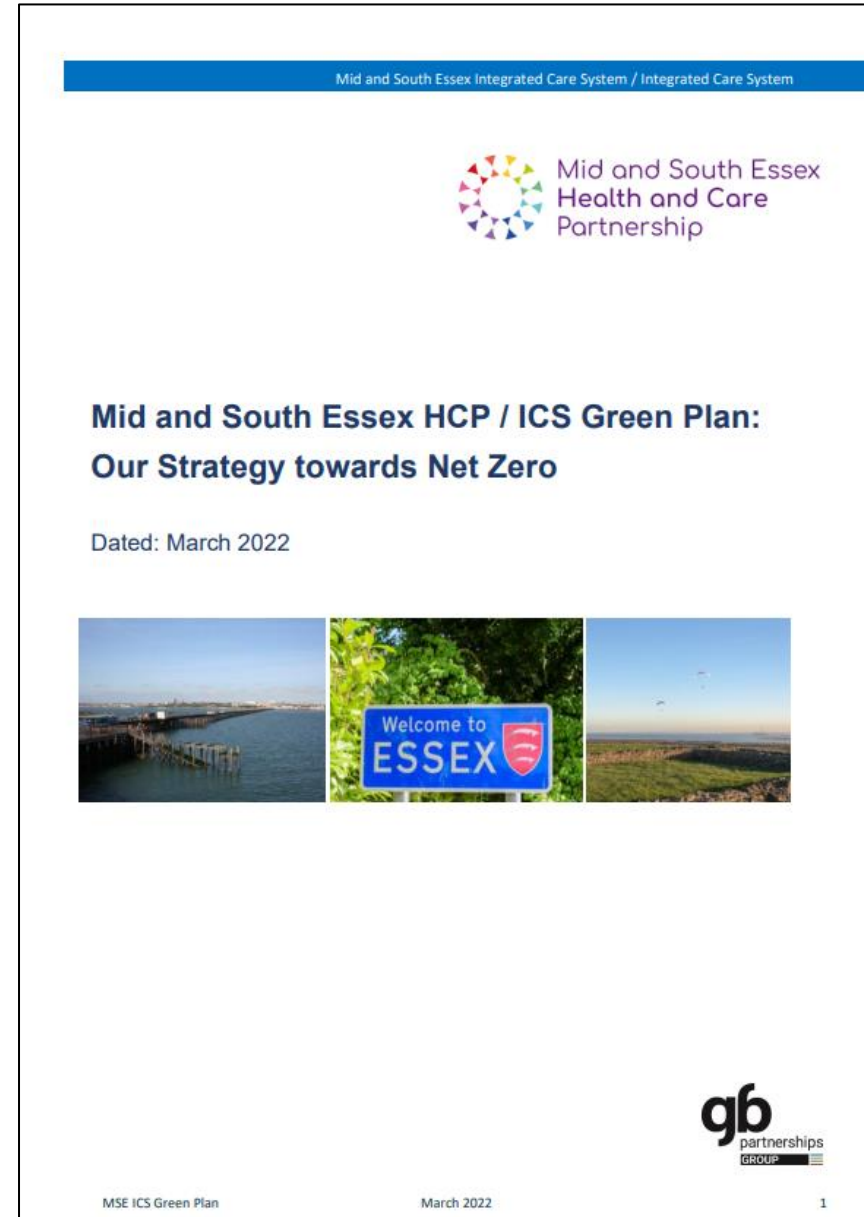
### Our Role:

- gbpartnerships met with colleagues across the whole system, representing the 8 different areas of focus for the Plan: Medicines, Procurement and Supply Chain, Travel and Transport, Adaptation, Sustainable Models of Care, Estates and Facilities and Food and Nutrition, and ensure a balanced approach for all system partners within the Plan.
- The Plan was written by gbpartnerships and then developed with colleagues across the system to ensure it reflected the HCP/ICS ambitions and to enable ownership.
- gbpartnerships are now looking forward to working with the system to deliver on the identified priorities and bring the green plan to life.



### Impact:

- gbpartnerships delivered a very strong and clear inaugural Green Plan, that's representative of the system.
- The plan has brought people together to share ideas and to discuss working together in next steps.





## The Power of Partnership

---



We work in partnership with NHS and public sector organisations to unlock complex estate challenges, planning, developing, and maintaining the highest quality, sustainable health and public buildings that serve the needs of communities, now and in the future.

[www.gbpartnerships.co.uk](http://www.gbpartnerships.co.uk)

[www.linkedin.com/company/gbpartnerships](https://www.linkedin.com/company/gbpartnerships)

**If you'd like to find out more or arrange an informal chat about our work contact:**

**Hugh Robinson, Group Business Development Director**

email: [hugh.Robinson@gbpartnerships.co.uk](mailto:hugh.Robinson@gbpartnerships.co.uk)

[linkedin.com/in/hughrobingsongbpartnerships/](https://linkedin.com/in/hughrobingsongbpartnerships/)